

# 2,000,000

**HERS-Rated Homes and Counting!**

## WHAT IS THE HERS INDEX SCORE?

The HERS Index Score is the nationally recognized, energy efficiency version of a MPG (miles-per-gallon) sticker for homes. It tells you how a home rates for energy efficiency and its potential energy savings as compared to other similar homes.



Lets you compare homes by energy usage



A lower HERS Index Score signifies a more energy efficient home with lower energy costs



Energy efficient homes have reduced carbon dioxide emissions by 4 million tons which is equal to taking 766,000 cars off the road each year

## HOW DOES A HERS INDEX SCORE WORK?

Certified RESNET Raters conducts diagnostic testing of a home to assess its energy performance and to determine:



Amount and location of air leaks



Amount of leakage from HVAC distribution ducts



Effectiveness of insulation inside walls and ceilings



Any existing or potential combustion safety issues

As of 2017, there is a network of over **1,900 certified RESNET HERS Raters** across the United States.



## WHY GET A HERS INDEX SCORE?

**Know if a home is energy efficient and how it compares to other similar homes**



**Improve home comfort and reduce energy bills**

- Drafty homes that are too cold in winter and too hot in summer suffer from high energy bills
- In 2016 homes with HERS Index scores generated energy savings of \$268 million



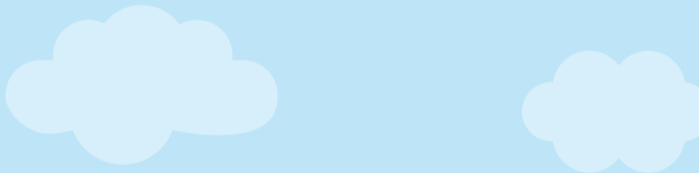
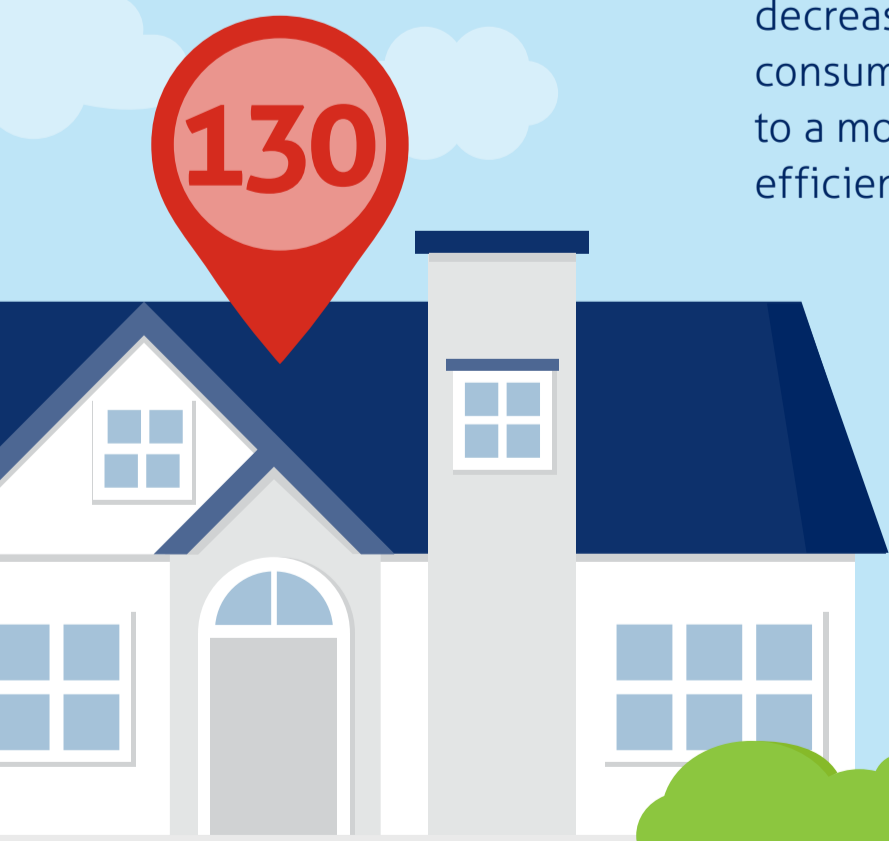
**Know a home's true ownership costs**

- Many homebuyers look primarily at prices and mortgage options, but fail to factor in cost of heating, cooling and other utilities
- Each 1-point decrease in the HERS Index corresponds to a 1% decrease in energy consumption compared to a model energy efficient home



**Enjoy a higher home resale value**

- Studies have found that existing houses with energy efficient certifications sold for 30% more\*
- \*Earth Advantage Institute



**Find a Certified RESNET HERS Rater!**  
[www.hersindex.com/get-a-home-energy-rating](http://www.hersindex.com/get-a-home-energy-rating)